



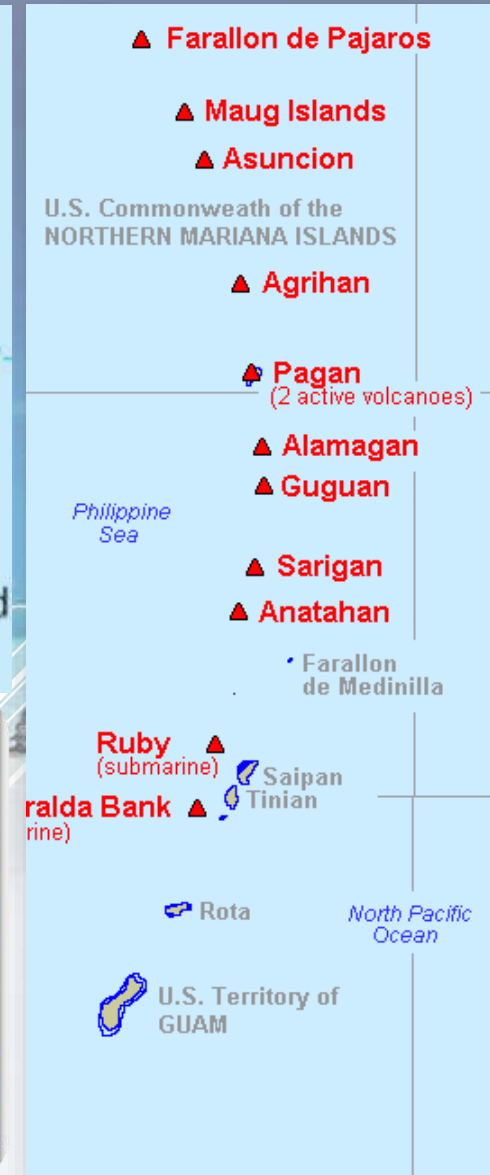
49TH ATOSSCOM ANNUAL CONFERENCE

CROWNE PLAZA, SAIPAN CNMI
OCTOBER 15-18, 2024

LEO B. TUDELA
EXECUTIVE DIRECTOR
COMMONWEALTH PORTS AUTHORITY

THE MARIANAS

- *Originally the Trust Territory of the Pacific Islands (TTPI)*
- *Now the U.S. Commonwealth of the Northern Mariana Islands (CNMI)*
- *14 islands (4 populated)*
- *Population 50,000*



CPA OWNED SEAPORTS

- ✓ Port of Saipan
- ✓ Port of Rota / Thomas C. Mendiola Commercial Port
- ✓ Port of Tinian / Jose P. San Nicolas Commercial Port

CPA OWNED AIRPORTS:

- ✓ Francisco C. Ada/Saipan International Airport
- ✓ Benjamin Taisacan Manglona/Rota International Airport
- ✓ Francisco Manglona Borja/Tinian International Airport



CPA MISSION STATEMENT:

"To develop air and sea navigation to and from the CNMI to its fullest potential."

CPA ENABLING LEGISLATION:

- The Marianas Islands Airport Authority was created in 1975 and responsible for the three existing airports.
- In 1981 The Commonwealth Ports Authority was created by Public Law 2-48 to include the seaports and governed by a seven-member Board of Directors.

CPA BOARD OF DIRECTORS



Steve K. Mesngon (Rota)
Vice Chairman of the Board



Ramon A. Tebuteb (Saipan)
Chairman of the Board



Thomas P. Villagomez (Saipan)
Secretary of the Board



Joseph M. Diaz (Saipan)
Treasurer of the Board
Chairman, Personnel
Affairs Committee



Dolores P. Kiyoshi (Tinian)
Chairwoman, Seaport
Facilities Committee



Antonio B. Cabrera (Saipan)
Chairman, Airport
Facilities Committee



Jose P. Ayuyu (Saipan)
Board Member

CPA MANAGEMENT



Leo Tudela
Executive Director



Albert Taitano
Rota Ports Manager



Jerra Cing
Saipan Seaport Manager



Antonio Borja
Tinian Ports Manager

A tropical beach scene with turquoise water and a white sand beach under a clear blue sky. The text is overlaid in the center.

**CPA COMPLETED,
ONGOING
AND FUTURE
PROJECTS**

PORT OF SAIPAN

Recently completed Projects:

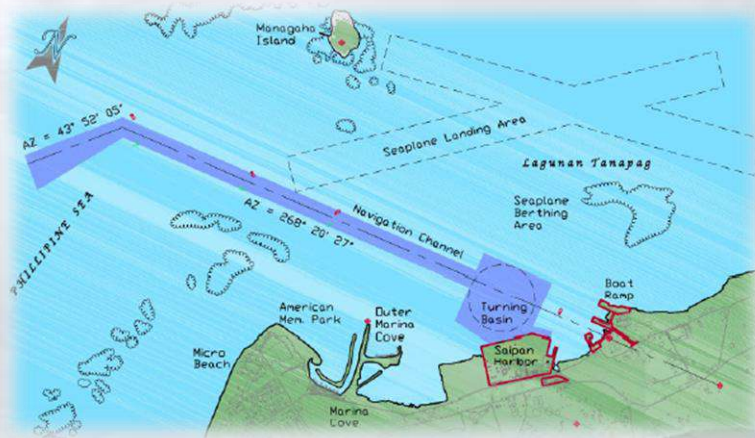
- Route 323, Industrial Drive Road Improvements

Ongoing/Upcoming Projects:

- Saipan Harbor Dredging Project
- Charlie Dock Extension
- Berth 103 Repairs
- South Seaplane Ramp Paving & Drainage Improvements
- Delta Dock Rehabilitation

Island of Saipan – 44 square miles
Port of Saipan – 195,247 sm

Saipan Harbor Dredging Project



Route 323, Industrial Drive Road Improvements



Charlie Dock 1 Expansion



Berth 103 Repairs



South Seaplane Ramp Paving & Drainage Improvement



ROTA WEST HARBOR

Recently completed Projects:

- *Perimeter Fence Replacement*

Ongoing/Upcoming Projects:

- *Berth 1 and 2 Improvements*
- *Feasibility Study*
- *Small Marina Vehicle Ramp Project*
- *Small Marina Telescopic Conveyor Belt*

Island of Rota – 32 square miles
Rota West Harbor– 88,588 sm

Berth 1 & 2 Improvements



Small Harbor Marina



Perimeter Fence Replacement

Small Marina Vehicle Ramp Project

Small Marina Telescopic Conveyor Belt

PORT OF TINIAN

Recently completed Projects:

- Port Improvement Project Completed 2022
- Installation of 11 Bollards, 10 Yokohama fenders, 30x20 concrete slab
- Roll on Roll off Ramp Improvement

Ongoing/Upcoming Projects:

- Phase 2 – Construction of a pipeline from the Seaport to the Airport
- Construction of a Pump House
- Biosecurity Building Construction
- New Perimeter Fence
- Warehouse Construction

Island of Tinian – 39 square miles
Tinian Harbor – 288,940 sm

Tinian Divert Airfield

Agreement:
Commonwealth Ports
Authority (CPA) vs US Air
Force (USAF)
Divert Project
Commencement
Phase 1
PHASE 2



Potential DoD Projects

An aerial photograph of a port facility. A long, narrow breakwater extends from the shore into the water, forming a large harbor. The water is a deep blue-green color. In the background, there are green hills and some buildings on the shore. The sky is overcast with grey clouds.

- Breakwater Replacement
- Main Port Dredging
- Warehouses
- Center Pier Removal

Breakwater Replacement



Center Pier Removal



- The removal of the center finger pier offers the following benefits:
 - Expansion of the turning basin at Berth 1 and 2
 - Allows larger vessels to call to port.
 - Increase number of berths at the seaport
 - Will allow CPA to expand the last finger pier.

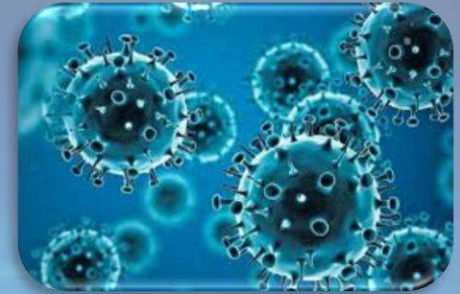
Dredging of Main Port

- Original inner harbor draft was -28 feet but is now -24 feet. The Entrance channel is at -35 feet.
- Project will include:
 - Dredge Berths 1-3 to its original depth.
 - Disposal or reuse of materials.



CONTINUING CHALLENGES: CPA/CNMI

- ▶ ***Decrease of tourists/passengers into the CNMI***
- ▶ ***Financial Constraints***
- ▶ ***Labor Shortages***
- ▶ ***Federal Policy Constraints***
- ▶ ***Geographic Location***



Si yu'us ma'ase,
olomwaay, and thank you

COMMONWEALTH PORTS AUTHORITY

